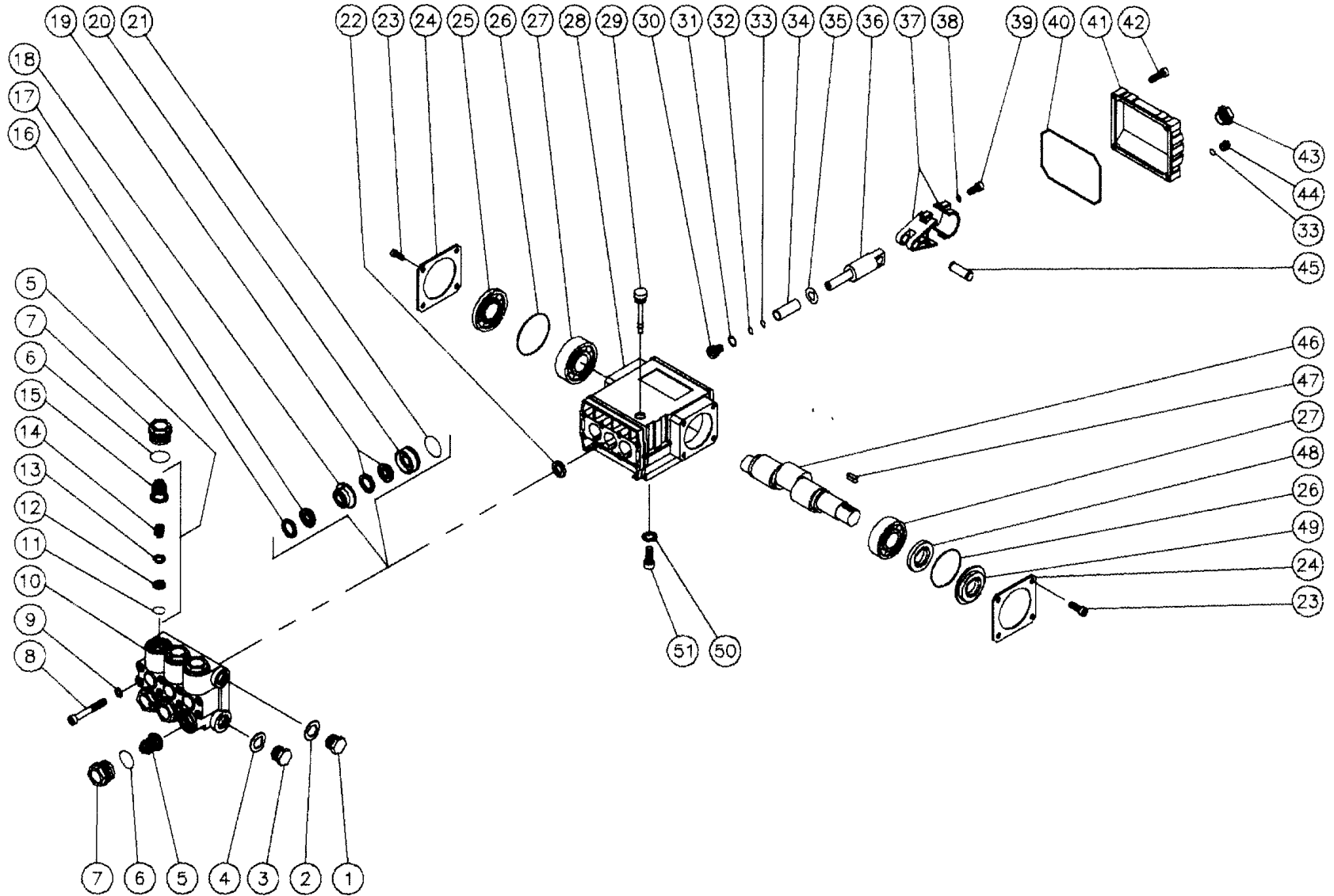


# PUMP ASSEMBLY (3-0005)

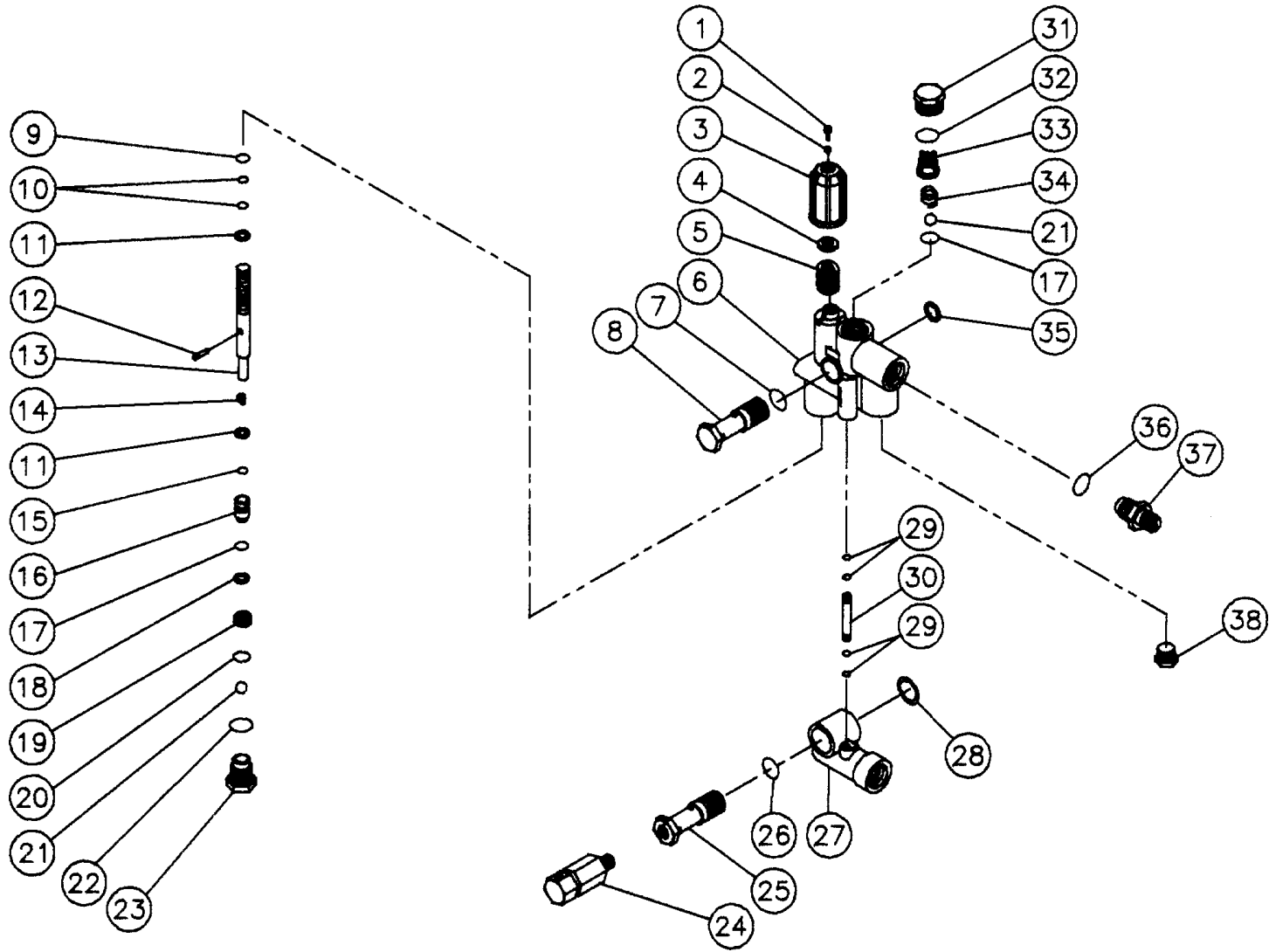


OMPMP019-122195-JTR

**PUMP ASSEMBLY (3-0005)**

REF #	DESCRIPTION	PART #	QTY	REF #	DESCRIPTION	PART #	QTY
1	Hex Plug	39-0018	1	29	Oil Dipstick	46-0143	1
2	Washer	28-0600	1	30	Piston Screw	46-0069	3
3	Hex Plug	39-0019	1	31	Washer	28-0400	3
4	Washer	28-0601	1	32	O-ring	25-0014	4
5	Valve Assembly (11-15) (See Kit 70-0009)	N/A Sep.	6	33	Back-up Ring	46-0109	3
6	O-ring	25-0012	6	34	Plunger-Ceramic	46-0078	3
7	Valve Plug	39-0020	6	35	Flinger Washer	46-0146	3
8	Bolt	27-8439	8	36	Piston Rod	46-0080	3
9	Lockwasher	29-0154	8	37	Connecting Rod	46-0077	3
10	Pump Manifold	46-0083	1	38	Washer	28-0201	6
11	O-ring (See Kit 70-0009)	N/A Sep.	6	39	Bolt	27-8405	6
12	Valve Seat (See Kit 70-0009)	N/A Sep.	6	40	Gasket Cover - Old Style	26-0081	1
13	Valve Plate (See Kit 70-0009)	N/A Sep.	6	--	O-ring Cover- New Style	25-0317	1
14	Valve Spring (See Kit 70-0009)	N/A Sep.	6	41	Crankcase Cover - Old Style	46-0085	1
15	Valve Cage (See Kit 70-0009)	N/A Sep.	6	--	Crankcase Cover - New Style	46-0226	1
16	Head Ring (See Kit 852-0012)	N/A Sep.	6	42	Bolt	27-8401	5
17	V-Packing (See Kit 852-0012)	N/A Sep.	6	43	Oil Level Indicator	46-0114	1
18	Intermediate Ring	46-0089	3	44	Hex Plug	39-0017	1
19	Low Pressure Seal (See 852-0012)	N/A	3	45	Connecting Rod Pin	43-0031	3
20	Low Pressure Seal Retainer	46-0081	3	46	Crankshaft	46-0230	1
21	O-ring	25-0048	3	47	Key	43-0028	1
22	Oil Seal	26-0046	3	48	Oil Seal	26-0048	1
23	Bolt	27-8000	8	49	Spacer-Bearing	46-0087	1
24	Retainer/Oil Level/Spacer	46-0084	2	50	Lockwasher	46-0605	4
25	Spacer	46-0088	1	51	Bolt	46-0606	4
26	O-ring	25-0060	2		Valve Kit (6 each of 11-15)	70-0009	
27	Ball Bearing	48-0011	2		Packing Kit (3 each of 16, 17, 19, 21)	852-0012	
28	Crankcase	46-0225	1				

# UNLOADER ASSEMBLY (8-0316)



OMGEN195-022795-BAR

UNLOADER ASSEMBLY (8-0316)								
REF. #	DESCRIPTION	PART #	QTY.		REF. #	DESCRIPTION	PART #	QTY.
1	Screw	27-8409	1		21	Ball	8-0201	2
2	Nut	30-3024	1		22	O-ring	25-0160	1
3	Pressure Regulating Knob	7-0050	1		23	Cap-Brass	39-0039	1
4	Spring Guide	8-0332	1		24	Thermo Valve	22-0148	1
5	Spring	49-0047	1		25	Fixing Screw	8-0333	1
6	Valve Body	8-0218	1		26	O-ring	25-0053	1
7	O-ring	25-0231	1		27	Inlet Body-Aluminum	46-0242	1
8	Fixing Screw	8-0224	1		28	Washer-Aluminum	28-0601	1
9	Back-up Ring	25-0137	1		29	O-ring	25-0161	4
10	O-ring	25-0138	2		30	By-pass Tube-Brass	8-0223	1
11	Washer	28-0209	2		31	Cap-Brass	39-0040	1
12	Pin	43-0051	1		32	O-ring	25-0136	1
13	Piston Guide	8-0219	1		33	Valve Guide	8-0225	1
14	Spring	49-0049	1		34	Spring	49-0046	1
15	O-ring	25-0163	1		35	Washer	28-0600	1
16	Drive Piston	8-0220	1		36	O-ring	25-0051	1
17	O-ring	25-0050	2		37	Nipple-Brass	8-0130	1
18	Back-up Ring	8-0284	1		38	Cap-Brass	39-0042	1
19	Valve Seat	8-0221	1			Unloader Repair Kit (Inc. 5, 7, 9, 10, 14, 15, 17-22, 25, 28, 31-33)	70-0020	1
20	O-ring	25-0159	1					